

Second Year Assignment 1

1. Sketch the curve with equation $y = f(x)$ where $f(x) = x^2 - 4$

2. a) Find the distance between $(4a, a)$ and $(-3a, 2a)$.

b) Hence find the distance between the following pairs of points:

(4,1) and (-3,2)

ii) (12,3) and (-9,6)

iii) (-20,-5) and (15,-10)

3. Look at the table showing the mean temperature in Heathrow and Beijing for the first week of 2015.

Find the mean and standard deviation of the temperature in each place.

What conclusions can you draw?

	Heathrow	Beijing
1-May-15	9.8	17.5
2-May-15	11.0	20.0
3-May-15	14.7	19.2
4-May-15	15.0	18.5
5-May-15	14.3	21.1
6-May-15	11.5	17.1
7-May-15	13.1	18.8

4. A particle is projected vertically upwards with a speed of 30 ms^{-1} from a point A. The point B is h metres above A. The particle moves freely under gravity and is above B for 2.4 seconds. Calculate the value of h .

5. A particle moves 100 m in a straight line. The particle starts with velocity $u \text{ ms}^{-1}$ and accelerates to a velocity of 10 ms^{-1} in 3 s. The velocity of 10 ms^{-1} is maintained for 7 s and then the particle decelerates to rest in a further 2 s.

a) Sketch a velocity-time graph of the motion of the particle.

b) Find the value of u

c) Find the acceleration of the particle in the first 3 s of motion.

6. A set of data values, x , is shown below:

52, 73, 31, 73, 38, 80, 17, 24

a) Code the data using the coding $y = \frac{x-3}{7}$

b) Calculate the mean of the coded data values

c) Use your answer to (b) to calculate the mean of the original data.

7. Copy these sentences and fill in the gaps

a) Newton's law of motion states that an object at rest will and that an object moving with constant will continue to move with constant unless an force acts on the object

b) Newton's law of motion states that the needed to a particle is equal to the of the mass of the particle and the produced. $F = ..$

c) Newton's law states that for every there is an and reaction

8. A frequency distribution is shown below

Class interval	1-20	21-40	41-60	61-80	81-100
Frequency	5	10	15	12	8

Use interpolation to find an estimate for the interquartile range

9. a) Show that $(2 + 5\sqrt{x})^2$ can be written as $4 + k\sqrt{x} + 25x$, where k is a constant to be found.

b) Hence find $\int (2 + 5\sqrt{x})^2 dx$

10. a) Sketch the curve with equation $y = (x - 4)(2x + 3)$

b) The curve cuts the x -axis at A and B and the y -axis at C . State the co-ordinates of A , B and C .

11. Two forces \mathbf{F}_1 and \mathbf{F}_2 act on a particle of mass m . Find the acceleration of the particle, $a \text{ ms}^{-2}$ given that

a) $\mathbf{F}_1 = (2\mathbf{i} + 7\mathbf{j}) \text{ N}$, $\mathbf{F}_2 = (-3\mathbf{i} + \mathbf{j}) \text{ N}$, $m = 0.25 \text{ kg}$

b) $\mathbf{F}_1 = (3\mathbf{i} - 4\mathbf{j}) \text{ N}$, $\mathbf{F}_2 = (2\mathbf{i} + 3\mathbf{j}) \text{ N}$, $m = 6 \text{ kg}$

c) $\mathbf{F}_1 = (-40\mathbf{i} - 20\mathbf{j}) \text{ N}$, $\mathbf{F}_2 = (25\mathbf{i} + 10\mathbf{j}) \text{ N}$, $m = 15 \text{ kg}$

d) $\mathbf{F}_1 = 4\mathbf{j} \text{ N}$, $\mathbf{F}_2 = (-2\mathbf{i} + 5\mathbf{j}) \text{ N}$, $m = 1.5 \text{ kg}$

12. Two particles, P and Q, have masses km and $3m$ respectively where $k < 3$. The particles are connected by a light inextensible string which passes over a smooth light fixed pulley. The system is held at rest with the string taut, the hanging parts of the string vertical and with P and Q at the same height above a horizontal plane. The system is released from rest. After release, Q descends with acceleration $\frac{1}{3}g$.

- Calculate the tension in the string as Q descends
- Show that $k = 1.5$
- State how you have used the information that the pulley is smooth
After descending for 1.8 s, the particle Q reaches the plane. It is immediately brought to rest by the impact with the plane. The initial distance between P and the pulley is such that, in the subsequent motion, P does not reach the pulley.
- Show that the greatest height, in metres, reached by the P above the plane is 1.26g.

13. The table shows the Daily Maximum Gust in Camborne in September 1987

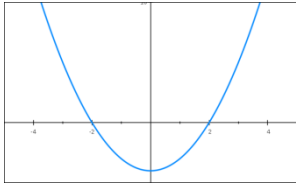
- Calculate Q_1 , Q_2 and Q_3
- Use the formula $Q_1 - 1.5 \times \text{IQR}$ and $Q_3 + 1.5 \times \text{IQR}$ to determine whether or not there are any outliers.
- Draw a box plot for this data.

Date	1-Sep	2-Sep	3-Sep	4-Sep	5-Sep	6-Sep	7-Sep	8-Sep	9-Sep	10-Sep
Max Gust	n/a	21	27	30	78	35	n/a	n/a	29	24
Date	21-Sep	22-Sep	23-Sep	24-Sep	25-Sep	26-Sep	27-Sep	28-Sep	29-Sep	30-Sep
Max Gust	33	26	26	25	17	26	13	n/a	25	30
Date	11-Sep	12-Sep	13-Sep	14-Sep	15-Sep	16-Sep	17-Sep	18-Sep	19-Sep	20-Sep
Max Gust	46	38	n/a	25	20	22	23	19	31	21

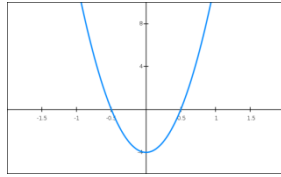
- Show that $x - 2$ is a factor of $9x^4 - 18x^3 - x^2 + 2x$
- Hence find four real solutions to the equation $9x^4 - 18x^3 - x^2 + 2x = 0$

Answers

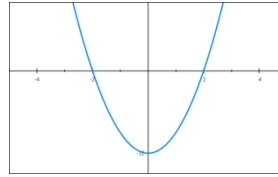
1a



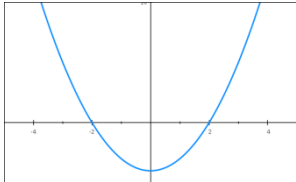
1b



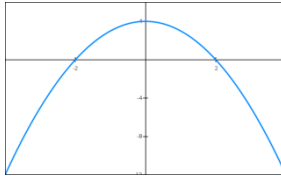
1c



1d



1e



2a) $5a\sqrt{2}$ bi) $5\sqrt{2}$ bii) $15\sqrt{2}$ biii) $25\sqrt{2}$

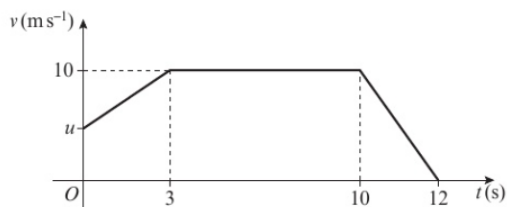
3 Heathrow: mean=12.7, s.d.=1.88

Beijing: mean = 18.9, s.d.=1.28

Beijing hotter. Heathrow more variable

4. $h = 39$ (2 s.f.)

5. a)



b) $u = \frac{10}{3}$, c) $\frac{20}{9}$

6a) 7, 10, 4, 10, 5, 11, 2, 3

b) 6.5

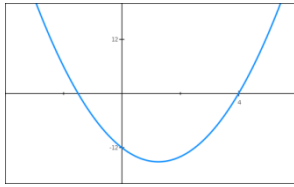
c) 48.5

8. 37.5

9. a) $k = 20$

b) $4x + \frac{40x^{\frac{3}{2}}}{3} + \frac{25x^2}{2} + c$

10. a)



b) $A\left(-\frac{3}{2}, 0\right)$, $B(4,0)$ $C(0, -12)$

11.

a) $(-4\mathbf{i} + 32\mathbf{j})\text{ms}^{-2}$

b) $\left(\frac{5}{6}\mathbf{i} - \frac{1}{6}\mathbf{j}\right)\text{ms}^{-2}$

c) $\left(-\mathbf{i} - \frac{2}{3}\mathbf{j}\right)\text{ms}^{-2}$

d) $\left(-\frac{4}{3}\mathbf{i} + 6\mathbf{j}\right)\text{ms}^{-2}$

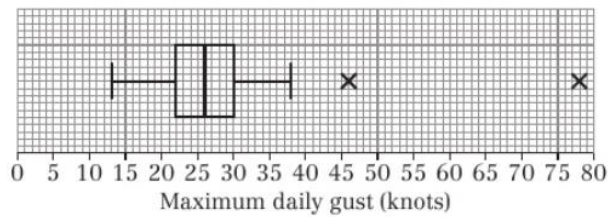
12. a) 2mg N

c) No friction means that the magnitude of the acceleration is the same in objects connected by a taut inextensible string

13. a) $Q_1 = 22$, $Q_2 = 26$, $Q_3 = 30$ b) 46 and 78

c)

Maximum daily gust in Camborne, September 1987



14 b) 0 , 2 , $-\frac{1}{3}$ and $\frac{1}{3}$